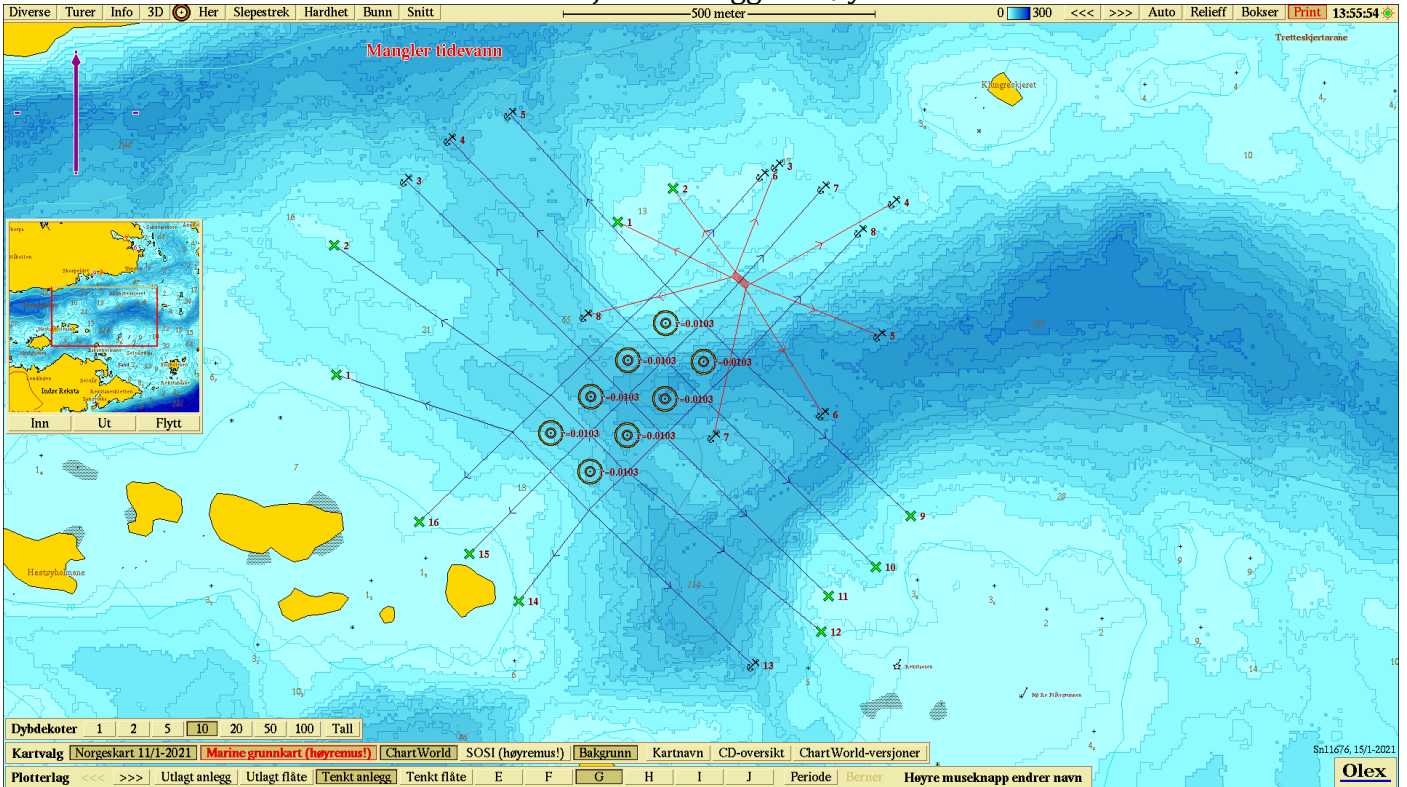


SELSTAD



Posisjoner anlegg Hestøya



Komponent	Posisjon N	Posisjon Ø	Komponent	Posisjon N	Posisjon Ø
Line 1	61°35.008	4°52.016	Hjørne N	61°35.086	4°52.613
Line 2	61°35.119	4°52.011	Hjørne Ø	61°35.020	4°52.750
Line 3	61°35.176	4°52.142	Hjørne S	61°34.891	4°52.475
Line 4	61°35.211	4°52.221	Hjørne V	61°34.958	4°52.335
Line 5	61°35.233	4°52.330			
Line 6	61°35.180	4°52.790	Senter Flåte	61°35.089	4°52.751
Line 7	61°35.169	4°52.900	FL1	61°35.139	4°52.527
Line 8	61°35.131	4°52.968	FL2	61°35.168	4°52.627
Line 9	61°34.885	4°53.059	FL3	61°35.188	4°52.815
Line 10	61°34.841	4°52.995	FL4	61°35.156	4°53.029
Line 11	61°34.816	4°52.909	FL5	61°35.041	4°53.002
Line 12	61°34.785	4°52.896	FL6	61°34.973	4°52.898
Line 13	61°34.756	4°52.772	FL7	61°34.954	4°52.701
Line 14	61°34.812	4°52.346	FL8	61°35.058	4°52.469
Line 15	61°34.853	4°52.257			
Line 16	61°34.880	4°52.165			

SELSTAD

